



Maximum Performance



UY350, UY450, UY600

FEATURES

- Freestanding, high spin
- Stainless steel and partially black cabinet
- Stainless steel drum and tub
- Large door opening (Ø54 cm) for easy loading and unloading
- Large drain valves (2 x Ø 76 mm)
- Frequency controlled motor
- Heating: boiler fed + prep for steam
- Perforated lifting ribs: more mechanical action, lower water consumption
- Eco washing programs - significantly reduces water and electricity consumption
- Liquid soap print (8 signals), 13 soap inlets
- Embedded soap hopper with 5 removable compartments
- Ergonomic height of door enables easy access with trolleys
- User friendly control position regardless user's height
- USB plug on control board
- RS485 plug on the rear panel
- Bumper (front side protection)
- Manual weighing system

OPTIONS

- Liquid soap pumps
- Recycle drain valve
- Insulation for energy, heat and noise reduction
- Extra signalization (orange light + sound)
- Steam/electric heating version
- Air operated water inlets
- Water tap
- 3rd water inlet, high inlets capacity
- Automatic weighing system through 4 weighing cells
- Tilting system: assists operators during loading & unloading

CONTROL

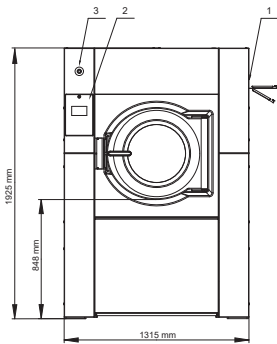
- UniLinc Touch
 - 7" full color touch screen display with swipe function: very intuitive for users
 - user-friendly screen with operating instructions built in as part of the control
 - Complete control content available in 34 languages
 - 20 standard wash programmes, total memory capacity for 99 programmes
 - Automated service reminders remind users to maintenance tasks
 - Water leak detection
 - Slow drain detection
 - Temperature-time verification

HIGH EFFICIENT SOFT-MOUNTED WASHER EXTRACTORS

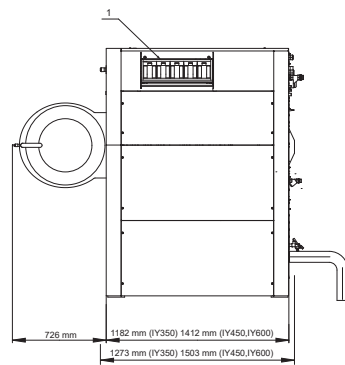
TYPE		UY350	UY450	UY600
INNERDRUM				
Capacity (1:10)	kg/lbs	35 / 77	45 / 99	60 / 132
Capacity (1:9)	kg / lbs	39 / 86	50 / 110	67 / 148
Volume	l	351	452	601
Diameter	mm	914	914	1035
DRUM SPEED				
Wash	rpm	38	38	36
Extraction	rpm	839	839	788
G-Factor		360	360	360
MOTOR				
Power	kW	4	7,5	7,5
HEATING				
100% hot water	°C	90	90	90
100% electrical	kW	24	36	54
Steam high pressure	bar	3-8	3-8	3-8
CONNECTIONS				
Electrical		3 x 200-240/50-60Hz 3 x 380-415/50-60Hz 3 x 440-480/50-60Hz	3 x 200-240/50-60Hz 3 x 380-415/50-60Hz 3 x 440-480/50-60Hz	3 x 200-240/50-60Hz 3 x 380-415/50-60Hz 3 x 440-480/50-60Hz
Water inlet	mm	2 x 25 (1")	2 x 25 (1")	2 x 25 (1")
Steam inlet	mm	19 (3/4")	19 (3/4")	19 (3/4")
Drain diameter	mm	2 x 76 (3")	2 x 76 (3")	2 x 76 (3")
TRANSPORT DATA				
Gross weight	kg	1170	1490	1640
Gross weight with tilting	kg	N/A	1530	1680
Net weight	kg	1010	1350	1500
Net weight with tilting	kg	N/A	1390	1540
Dimensions H x W x D	mm	1925 x 1315 x 1270	1925 x 1315 x 1502	1925 x 1315 x 1502
Packing dimensions H x W x D	mm	2125 x 1425 x 1470	2125 x 1425 x 1700	2125 x 1425 x 1700

Standard = standard version.

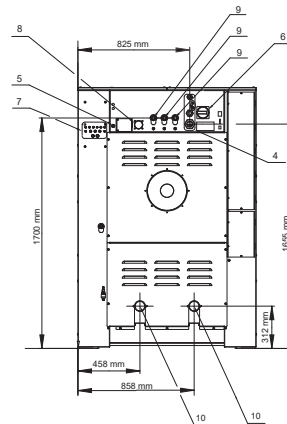
The data concerning dimensions of machines include all extended parts.



FRONT SIDE



LEFT SIDE



REAR SIDE

1. Soap hopper
2. Keyboard
3. Emergency stop
4. Electrical connection
5. Electrical connection to liquid soap
6. Main switch
7. Liquid soap pump connections
8. Air vent tub
9. Water connection
10. Drain valve

TO LEARN MORE, OR TO FIND A DISTRIBUTOR IN YOUR AREA, VISIT UNIMAC.COM

ALLIANCE LAUNDRY SYSTEMS - SHEPARD ST, RIPON WI 54971 - +1 800 587 5458

Consult your UniMac® distributor for details. For the most accurate information, the installation guide should be used for all design and construction purposes. Due to continuous product improvements, design and specifications subject to change without notice. The quality management systems at Alliance Laundry Systems' Ripon facility has been registered to ISO 9001:2008.

UniMac® by Alliance Laundry Systems