

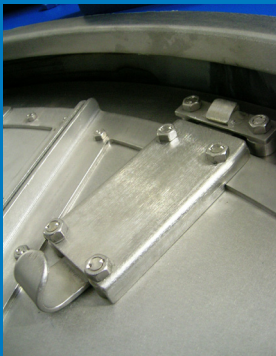


FRONTAL SPLIT POCKET C2000 - C3000 - C4000 WASHER EXTRACTOR



Optimizing laundry efficiency.

Due to the mechanical movement of the drum, sheets get tangled in open pockets, and especially on the large drum volumes. The split pocket washer separates the load in smaller batches, and as a result, the sheets get less entangled. This assures easier unloading and more efficient handling between washer and finishing line.

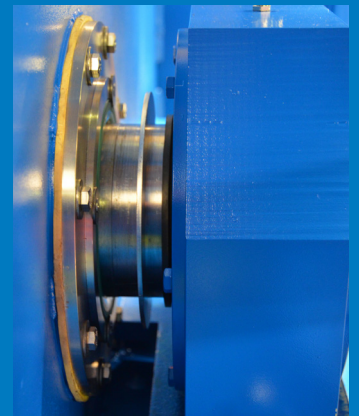


Inner door security.

A security component is installed to stop the outer door being closed when the inner door is not closed properly. This way, it is not possible to start the washer without the doors being properly closed.

Bearing system.

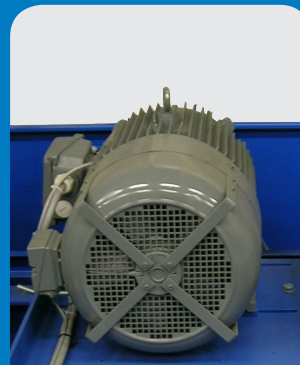
The drum is held in place by heavy duty roller bearings on the front and back of the machine. The bearings are mounted outside and independently from the drum, avoiding any contact with water and assuring easy maintenance.



Large door opening.

With 3000 to 3500 cm², the Lapauw 3 pocket washer line offers one of the largest drum access openings for split pocket machines on the market.

This assures a high productivity and an efficient handling of even large volumes of linen. The compartment positions itself automatically to always assure a perfect alignment between the compartment and the outer door.



Single motor drive.

The single motor drive, even on the largest capacity machines, with frequency convertor, assures high efficiency and an unlimited choice in speeds.



Unique suspension.

Instead of resting on shock absorbers, the drum is positioned on the suspension system, which always stabilizes the drum in the middle and assures a natural balance. The suspension system consists of 4 units with spring in an oil bath, assuring a durable and easy to maintain suspension system.

TECHNICAL SPECIFICATIONS.

General	C2000		C3000		C4000	
Compartments	3		3		3	
Loading capacity	200 kg	441 lbs	300 kg	661 lbs	400 kg	882 lbs
Drum volume	2.031 liter		2.944 liter		3.917 liter	
Drum diameter	1.500 mm	59 inch	1.830 mm	72 inch	1.830 mm	72 inch
Drum depth	1.150 mm	45 inch	1.120 mm	44 inch	1.490 mm	59 inch
Door opening surface	2.800 cm ²	434 sq.inch	4.300 cm ²	667 sq.inch	4.300 cm ²	667 sq.inch
Max. extracting speed	650 RPM		600 RPM		600 RPM	
G-Factor	355		369		369	
Motorpower	37 kW	50 HP	45 kW	60 HP	50 kW	67 HP
Water inlet	2" (DN50)		2 1/2" (DN65)		2 1/2" (DN65)	
Drain	6" (DN150)		8" (DN200)		8" (DN200)	
Steam inlet	1" (DN25)		5/4" (DN32)		5/4" (DN32)	
Compressed air inlet	3/8" (DN10)		3/8" (DN10)		3/8" (DN10)	
Soap dispenser units	5		5		5	
Liquid output signals	10		10		10	
Noise level	72 db		72 db		72 db	

Dimensions	C2000		C3000		C4000	
Width	2.595 mm	102 inch	2.940 mm	116 inch	3.033 mm	119 inch
Depth	1.935 mm	76 inch	1.990 mm	78 inch	2.320 mm	91 inch
Height	2.255 mm	89 inch	2.740 mm	108 inch	2.840 mm	112 inch
Weight	5.665 kg	12.489 lbs	6.970 kg	15.366 lbs	8.290 kg	18.276 lbs

Consumption*	C2000		C3000		C4000	
Cold water	900 l/h		1.500 l/h		1.950 l/h	
Hot water	2.700 l/h		4.500 l/h		5.850 l/h	
Drain	3.600 l/h		6.000 l/h		7.800 l/h	
Steam	169 kg/h		246 kg/h		312 kg/h	
Electricity	9 kW/h		11 kW/h		12 kW/h	
Compressed air	60 l/h		60 l/h		60 l/h	

* Consumption based on 1,25 load/h, 25% cold water, 75% hot water.

Possible versions	C2000		C3000		C4000	
Standard	x		x		x	



LAPAUW INTERNATIONAL

OUDE IEPERSEWEG 139
8501 HEULE, BELGIUM

TEL. +32 (0)56 35 42 95
FAX. +32 (0)56 35 45 59

INFO@LAPAUW.BE
WWW.LAPAUW.BE